

Social Psychology

Intimate Relationships



11/23/2004

Intimate Relationships.ppt

1

What We Will Cover in This Section

- Close relationships
- Love
- Marriage
- Divorce



11/23/2004

Intur...elatio...ppt

2

Types of Relationships

EXCHANGE

Economic model of interaction. People want to maximize their gains and minimize their losses.

COMMUNAL

Mutual responsibility. Provide benefits according to other's needs. Show concern and caring.

11/23/2004

Intur...elatio...ppt

3

Intimacy

Sharing that which is innermost with others.



11/23/2004

Intur...elatio...ppt

4

Intimacy Elements

1. Minimizing psychological boundaries.
2. Less tendency to make Fundamental Attribution Error.
3. Sharing resources.
4. Emphasis on Communal Relationship instead of Exchange Relationship.
5. Shared schemas.
6. Shared memory system.

11/23/2004

Intur...elatio...ppt

5

Close Relationships

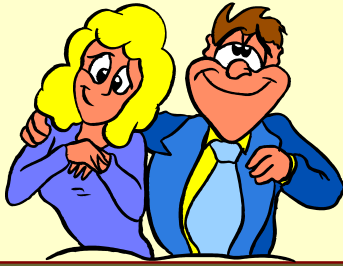
- Need fulfillment.
 - Psychological needs.
 - Physical needs.
- Interdependence.
 - Level of influence.
 - Quantity of shared activities.

11/23/2004

Intur...elatio...ppt

6

Levels of Relationships



11/23/2004

Intur...elatio...ppt

7

1. Unilateral Awareness

See other person in terms of outward characteristics.



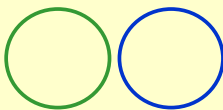
11/23/2004

Intur...elatio...ppt

8

2. Surface Contact

Both people are aware of each other.



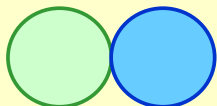
11/23/2004

Intur...elatio...ppt

9

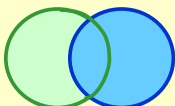
3. Mutuality

- Share knowledge of each other.
- Experience a sense of responsibility for the other person.
- Develop a set of personal norms regulating the relationship.



4. Intersection

- Increasing levels of self-disclosure.
- Minor to Moderate to Major

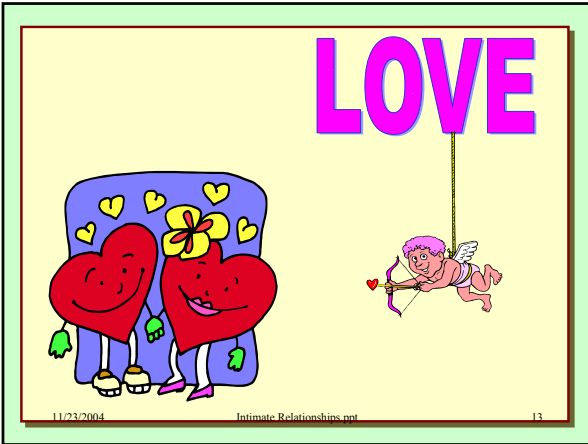


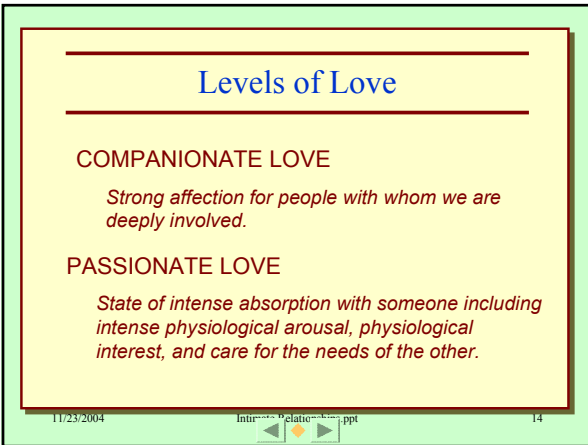
Sharing Personal Information

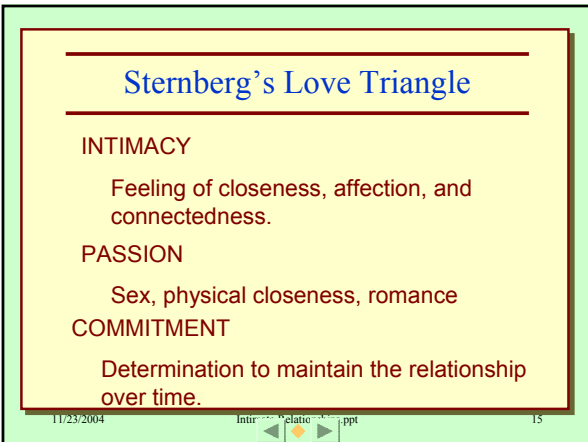
INTIMACY

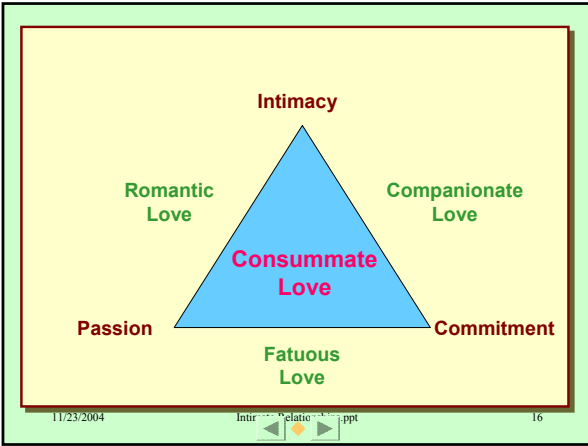
1. Descriptive
2. Evaluative

RECIPROCITY









	Intimacy	Passion	Commitment
Non love	-	-	-
Liking	+	-	-
Infatuation	-	+	-
Empty love	-	-	+
Romantic	+	+	-
Companionate	+	-	+
Fatuous	-	+	+
Consummate	+	+	+

11/23/2004 Intur...elatio...ppt 17

MARRIAGE

What are the characteristics of a good partner?

11/23/2004 Intur...elatio...ppt 18

The AUDIENCE SAYS!

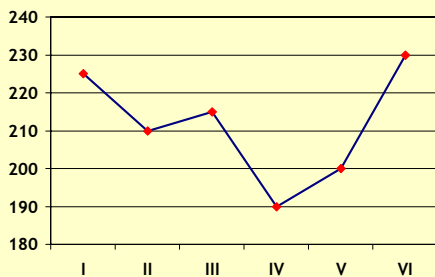
- Choosing a partner
 - Mutual attraction
 - Dependability
 - Emotional Stability
 - Intelligence
 - Pleasing disposition

11/23/2004

Intur...elatio...ppt

19

Marital Satisfaction



11/23/2004

Intur...elatio...ppt

20

Divorce

- Intrapyschic Phase
 - Personal reassessment.
 - Was partner adequate?
 - Focus on the negative aspects of partner.
 - What alternatives are there?
- Dyadic Phase
 - Interpersonal
 - Confront partner.
 - Negotiation
 - Fix it or forget it.

11/23/2004

Intur...elatio...ppt

21

Divorce

- Social Phase
 - Breaking up
 - Negotiate what happens afterwards.
 - Create face saving accounts.
 - Consider effects on other social relationships.
 - Get professional help.
- Grave Dressing
 - Ending
 - End the relationship psychologically and physically.
 - Communicate own version of the breakup.

11/23/2004

Intur...elatio...ppt

22

THE END

11/23/2004

Intur...elatio...ppt

23
